



John Deere 7320



John Deere 7320



2012 John Deere 7130



John Deere 6430



2007 John Deere 6215



John Deere 6130M



John Deere 6130M



John Deere 6120R



John Deere 6120R



John Deere 6120R



John Deere 6120R



John Deere 6120R



John Deere 6120R



John Deere 6120R



John Deere 6120R



2015 John Deere 5075E



John Deere 4720



John Deere 4052M



John Deere 2305



John Deere 1025R



John Deere 1023E



Kubota M126X



2020 Kubota M5-091



Kubota M5660SU



Kubota L3901



Kubota B2301



Mahindra 2126



New Holland TS6.120



DEMOTT AUCTION
 1894 Sylvester Hwy. • Moultrie, GA 31768
 229.985.4565
 Email: Auction@DeMottAuction.com
 Auctioneer: Terry DeMott, Sr. FL#AU1833-AB1285
 Auctioneer: John DeMott FL#AU4399

**20TH ANNUAL
 "CANE COUNTRY"
 AUCTION**
 Thu., Feb. 19, 2026, 8:30 am
 OKEECHOBEE, FL

UPCOMING AUCTIONS
TKM FARMS RETIREMENT AUCTION
 Friday, March 13th, 2026
 Wray, GA



Deere 60G



Gehl RS6-34



Komatsu WA270

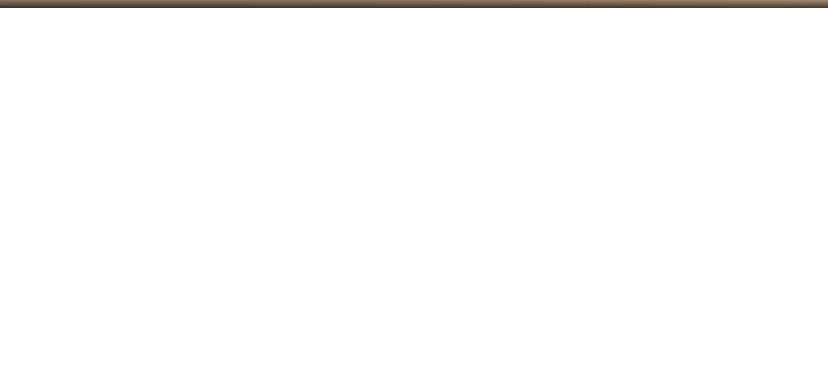
Inspection: Wednesday February 18th, 2026
 Registration: Anyone wishing to bid on items in the auction must register & obtain a bidder's card. Anyone bidding must have their own bidders number. DeMott Auction Co., Inc. reserves the right to accept or reject the bid of anyone registered or unregistered.
 Terms & Conditions: Payment in full for all purchases is required on auction day in the form of cash or cashier's check. Personal or company checks must be accompanied by a current, original bank letter of guarantee, prior letters and or bank statements are unacceptable documents. NO CREDIT CARDS - NO EXCEPTIONS! Auctioneer cannot verify checks.
 Sales Tax: All sales are subject to FL sales tax unless you have a copy of a current 2025 resale tax exemption certificate.
 NOTICE: International buyers must provide a current, valid passport for identification purposes and a \$10,000.00 deposit. The deposit must be made in US funds 5 days prior to auction.
 Exporters: If you take possession of your purchase in the United States, you must pay sales tax. You must provide the following within 10 days of the auction for a refund of sales tax Bill of lading from the trucking company that removed the items or a Dock Receipt from the port.
 Titles: Effective immediately - ALL titled items must have signed title or POA on location prior to consigning and placing in line. A processing fee will be charged for all title work. Titles will be processed and mailed to the buyer after auction.
 Note to auto dealers: You must bring a copy of your dealer's license and tax exemption.
 Loadout: All items MUST BE removed by Feb. 26, 2026. After the scheduled removal time, items will be considered abandoned and you will be charged a removal/storage fee for disposal of your items.
 Note: A Buyers Premium will be charged 10% with a cap of \$5,000 per item. In addition to the above buyer's premium, online buyers will be charged 2.5% with a cap of \$750 per item.
 Warranty/Condition: All items sold "As-Is", "Where-Is" without any warranties as to usefulness & merchantability. Purchasers must inspect the property prior to bidding. This is only furnished as a guide, information and descriptions are believed to be accurate, however, DeMott Auction Co., Inc. makes no guarantees as to accuracy.

All announcements made on sale day supersede everything written or implied. Despite our efforts to avoid withdrawal of items from the sale list after they are advertised, it may sometimes be necessary, call before coming to verify that a specific piece is present.

**First Class Mail
 -Dated Material-**

Presorted
 First Class
 U.S. Postage
PAID
 Permit #92
 Thomasville, GA

RETURN SERVICE REQUESTED



To be removed from our mailing list or cancel duplicate mailings,
 please call us at 800.985.5699.

If you are planning an auction of your own, retiring
 or liquidating surplus equipment, please don't
 hesitate to contact us for a confidential consultation.

Online Bidding
 Available Via



**2 Rings
 All Day!**

**20TH ANNUAL "CANE COUNTRY"
 AUCTION**
 Thurs., February 19th • 8:30 am
 777 NE 144TH DR – OKEECHOBEE, FL



John Deere 6120R



John Deere 6310
w/John Deere 640R Loader



John Deere 7230



Hitachi ZW80



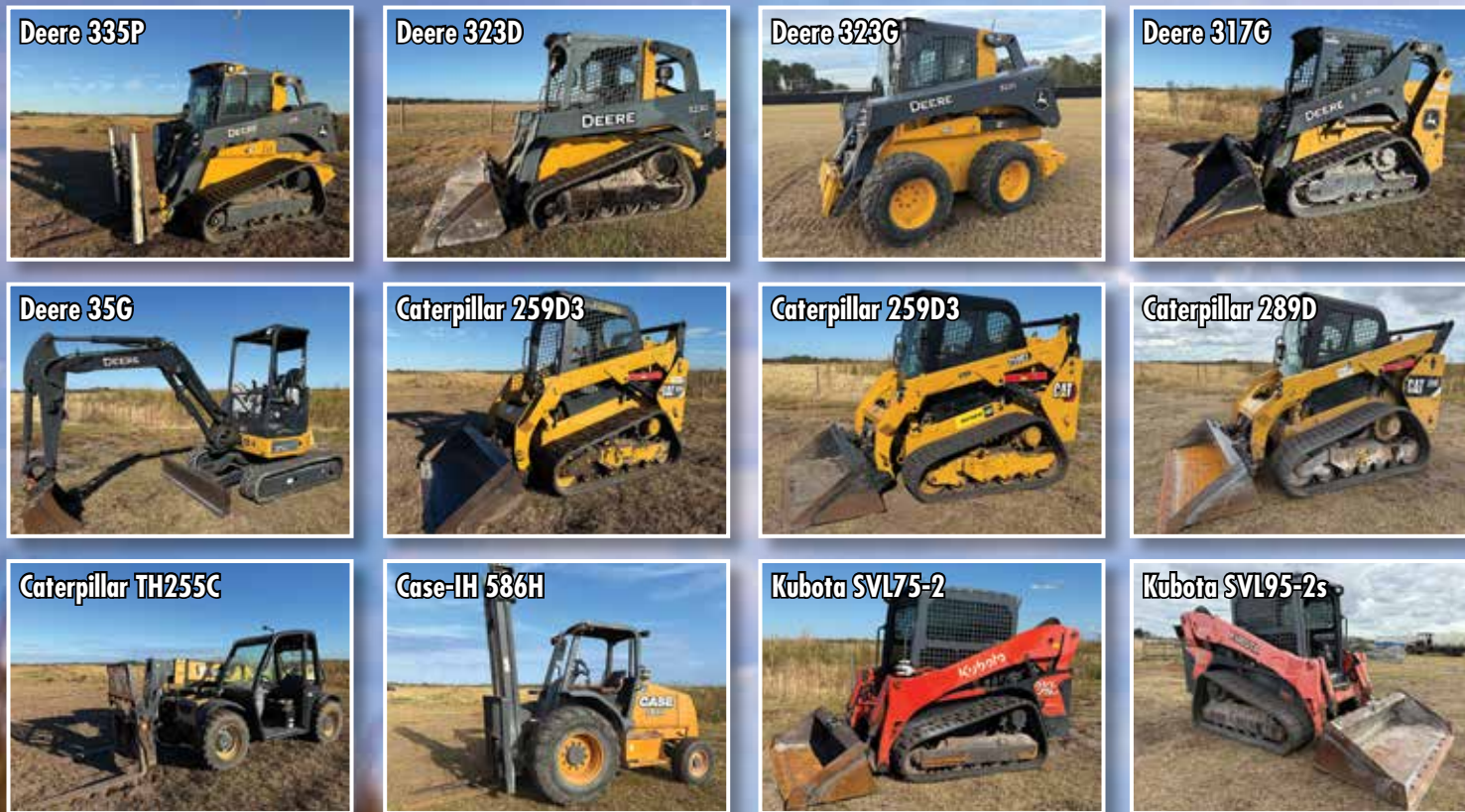
2021 Ford F-150 XL



Volvo L45G

FARM • CONSTRUCTION • REAL ESTATE
229.985.4565 | www.DeMottAuction.com





UPCOMING AUCTIONS

TKM FARMS RETIREMENT AUCTION

March 13th, 2026
Wray, GA

24TH ANNUAL SPRING AUCTION

March 20th, 2026
Iron City, GA

31ST ANNUAL "CITRUS, RANCH, & PRODUCE SPECIAL" AUCTION

April 23rd, 2026
Okeechobee, FL

AG & CONTRACTOR'S SPECIAL AUCTION

May 15th, 2026
Iron City, GA



TRACTORS

2020 John Deere 8370R Cab MFWD IVT Trans w/ Front & Rear Duals 6653 Hrs
John Deere 7320 Cab MFWD 16 Spd PQ Trans
John Deere 7320 Cab MFWD 16 Spd PQ Trans
John Deere 7230 Cab MFWD 16 Spd PQ Trans w/ Rear Duals 5459 Hrs
2012 John Deere 7130 Cab MFWD 16 Spd P.Q. Trans
John Deere 6430 Cab MFWD 24 Spd PQ Trans 4770 Hrs
2007 John Deere 6215 Cab SP Trans
John Deere 6130M Cab MFWD 16 Spd PQ Trans w/John Deere 640R Loader 5364 Hrs
John Deere 6130M Cab MFWD 24 Spd PQ Trans 4390 Hrs
John Deere 6130M Cab MFWD 24 Spd PQ Trans 5641 Hrs
John Deere 6120R Cab MFWD IVT Trans
John Deere 6120R Cab MFWD IVT Trans 8524 Hrs
John Deere 6120R Cab MFWD IVT Trans 7975 Hrs
John Deere 6120R Cab MFWD IVT Trans 6579 Hrs
John Deere 6120R Cab MFWD IVT Trans 6893 Hrs
John Deere 6120R Cab MFWD IVT Trans 7875 Hrs
John Deere 6120R Cab MFWD IVT Trans 5418 Hrs
John Deere 6120R Cab MFWD IVT Trans 7318 Hrs
John Deere 6120R Cab MFWD IVT Trans 7648 Hrs
2013 John Deere 5075E Canopy MFWD PowrReverser Trans 6819 Hrs
2015 John Deere 5075E Canopy MFWD PowrReverser Trans 4954 Hrs
John Deere 4720 Cab MFWD HST Trans
John Deere 4052M Rops MFWD HST Tans w/ John Deere 400E Loader
John Deere 2305 Rops MFWD HST Trans w/ John Deere 200x Loader 256 Hrs
John Deere 1025R Rops Hst Trans w/ 60" Belly Mower
John Deere 1023E Rops HST Trans w/ John Deere D120 Loader 88 Hrs
Kubota M126X Cab MFWD 2356 Hrs
2020 Kubota M5-091 Cab 2wd Hydraulic Shuttle Trans 7087 Hrs
Kubota M5660SU Rops MFWD Hydraulic Shuttle Trans
Kubota L3901 Rops MFWD w/ Kubota LA525 Loader 255 Hrs
Kubota B2301 Rops MFWD HST Trans w/ Kubota LA435 Loader 226 Hrs
Mahindra 2126 Rops MFWD HST Trans w/ Mahindra L21 Loader 14 Hrs
New Holland T56.120 Cab w/ New Holland 835TL Loader 3909 Hrs

CONSTRUCTION

Bobcat S175 Orops Rubber Tire Skid Steer
Deere 335P Cab 2 Spd Rubber Track Skid Steer 1092 Hrs
Deere 323D Orops 2 Spd Rubber Track Skid Steer
Deere 332G Cab 2 Spd Rubber Tire Skid Steer 4685 Hrs
Deere 317G Orops 2 Spd Rubber Track Skid Steer 1647 Hrs
Deere 60G Cab Rubber Track Mini Excavator w/ Hydraulic Thumb 1108 Hrs
Deere 35G Orops Rubber Track Mini Excavator 2933 Hrs
Caterpillar Q.A Tree Boom
Caterpillar Q.A 72" Bucket
Caterpillar 259D3 Cab 2 Spd Rubber Track Skid Steer 952 Hrs
Caterpillar 259D3 Cab 2 Spd Rubber Track Skid Steer 2917 Hrs
Caterpillar 289D Cab 2 Spd Rubber Track Skid Steer 6031 Hrs
Caterpillar TH255C Orops Telescopic Forklift
Case-IH 586H Orops 4x2 All-Terrian Forklift 6758 Hrs
Kubota SVL75-2 Cab 2 Spd High Flow Rubber Track Skid Steer 2557 Hrs

SALES REPRESENTATIVES: Dennis Sasser: (863) 532-1078, John DeMott (229) 891-7523
SITE MANAGER: Alberto Rodriguez 229-529-5189 **AUCTION MARKETING:** Kyle Blaney 229-873-1478

Kubota SVL95-2s Cab 2 Spd High Flow Rubber Track Skid Steer 497 Hrs
Kubota SVL95-2s Cab 2 Spd High Flow Rubber Track Skid Steer 4416 Hrs
Kubota R520S Orops Articulating Wheel Loader 6331 Hrs
Komatsu WA270 Cab Articulating Wheel Loader 9603 Hrs
New Holland L190 Orops Rubber Tire Skid Steer 3777 Hrs
Hitachi ZW80 Orops Articulating Wheel Loader 2797 Hrs
Gehl RT175 Orops Rubber Track Skid Steer 2277 Hrs
Gehl RS6-34 Gen:3 Orops Telescopic Forklift 1821 Hrs
Gehl RS6-34 Gen:3 Orops Telescopic Forklift 4251 Hrs
ASV Posi-Track RT-40 Orops Rubber Track Skid Steer 912 Hrs
2014 JCB 930 Orops All-Terrian Forklift
Sellick S60 OROPS 4x2 All-Terrain Forklift
JLG Skytrak 6036 OROPS Telescopic Forklift 4076 Hrs
Volvo EC220DL Cab Metal Track Excavator 7882 Hrs
2015 Volvo L30GS Orops Articulating Wheel Loader
Volvo L45G Cab Articulating Wheel Loader
Volvo L20H Cab Articulating L20H Articulating Wheel Loader 223 Hrs
Broce BW260 Orops Street Sweeper
Genie AWP-19 Basket Lift

FARM EQUIPMENT

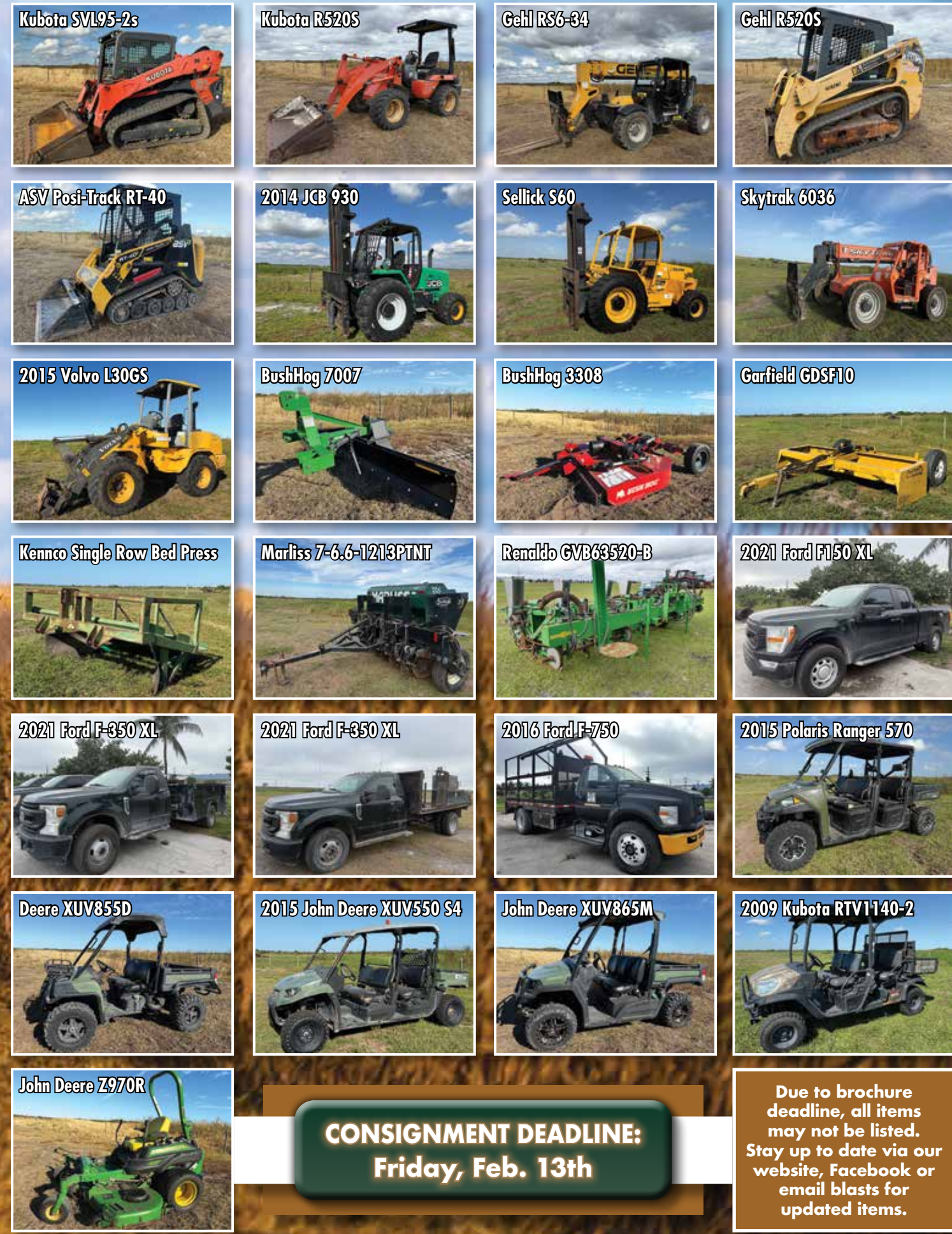
BushHog 7007 3pt Blade
BushHog 3308 P.T 8' Mower
Garfield GDSF10 PT 10' Box Blade
Kennco Single Row Bed Press
Marliss 7-6.6-1213PTNT P.T Grain Drill
Renaldo GVB63520-B 6 Row Planter
P.T 1000 Gallon Supply Tank
Rhino Servis 2160 Ditch Bank Mower
LandPride 3pt Disc
Schulte XH1500 Series 4 P.T 15' Batwing Mower
Schulte XH1500 Series 4 P.T 15' Batwing Mower
John Deere CX15 P.T 15' Batwing Mower
Teyme 3pt 50 Sprayer
Frontier AF11E 7' Front Blade

VEHICLES & TRAILERS

2021 Ford F-150 XL Ext Cab 4x4 96255 Mi
2021 Ford F-150 XL Ext Cab 4x4 117745 Mi
2008 Ford F-150 XL Ext Cab 4x2 211337 Mi
2021 Ford F-350 XL Reg Cab w/ Service Bed
2021 Ford F-350 XL Reg Cab w/ Service Bed 45261 Mi
2016 Ford F-750 Super Duty Reg Cab 68431 Mi

ATV, MOWERS, & MISC

2015 Polaris Ranger 570 Crew 4x4 1662 Hrs
John Deere XUV865M 4x4 Gator 1322 Hrs
2015 John Deere XUV550 S4 Crew 4x4 Gator
John Deere XUV855D 4x4 Gator
John Deere Z997R Zero Turn Mower w/ 72" Deck 1414 Hrs
John Deere Z970R Zero Turn Mower w/ 72" Deck 1034 Hrs
2009 Kubota RTV1140 Crew 4x4 Diesel 1238 Hrs
2011 Kubota ZD326 Zero Turn Mower w/ 60" Deck
Kubota ZD1211 Zero Turn Mower w/ 60" Deck
P.T. Gorman-Rupp Pump



CONSIGNMENT DEADLINE:
Friday, Feb. 13th

Due to brochure deadline, all items may not be listed. Stay up to date via our website, Facebook or email blasts for updated items.